

# Dispersion of SEPTON™ BIO-series into polyolefin (Homo-PP, LDPE)

Elastomer R&D department  
Elastomer division

***kuraray***

# Formulation and molding condition

Formulation	1	2	3	4	5	6	7	8
SEPTON™ BIO-series SF902	30				30			
SEPTON™ BIO-series SF903		30				30		
SEPTON™ BIO-series SF904			30				30	
HYBRAR™ 7125				30				30
Homo-PP *1	70	70	70	70				
Bio-LDPE*2					70	70	70	70

\*1 MFR 15g/10min (230deg.C/2.16kg)

\*2 MFR 30g/10min (190deg.C/2.16kg)

## Molding condition: Injection molding

Injection molding machine EC75SX (Shibaura Machine Co., Ltd.)  
Clamping force: 75 tf

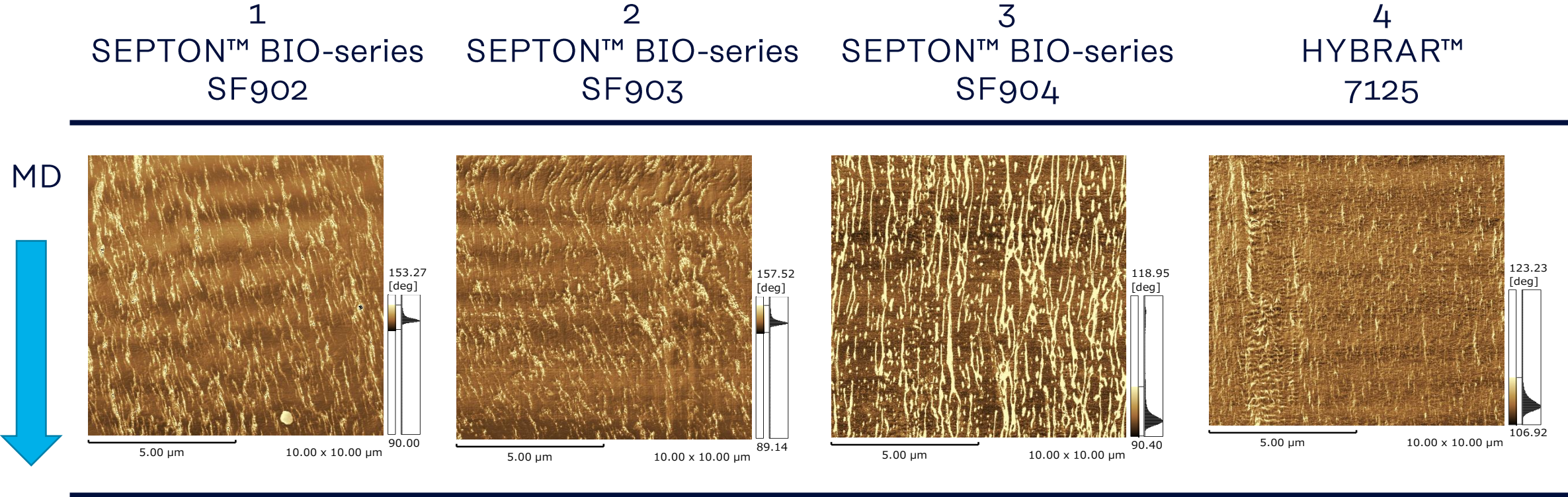
Cylinder temp. 210 deg.C

Mold temp. 40 deg.C

Blend Dry blend

# Elastomer/ Homo-PP

## SPM images of microtome section of compounds



# Elastomer/ LDPE

## SPM images of microtome section of compounds

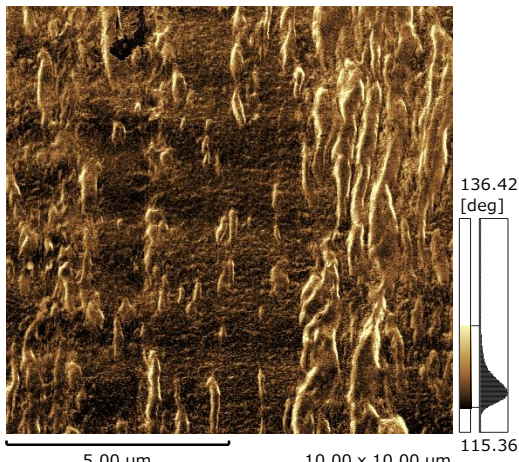
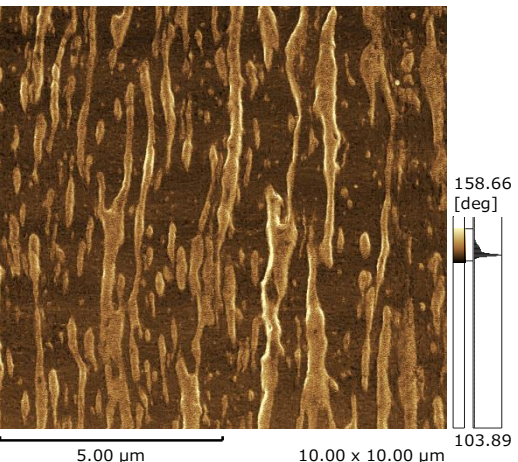
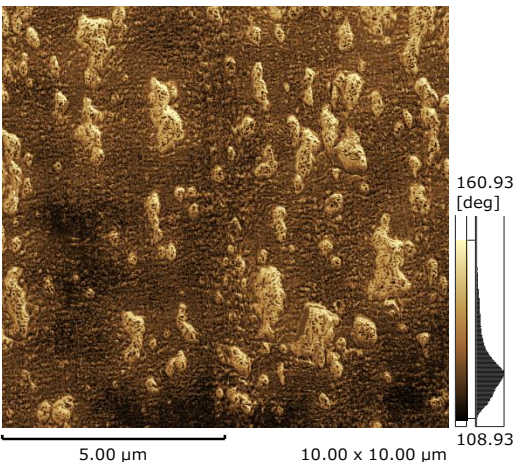
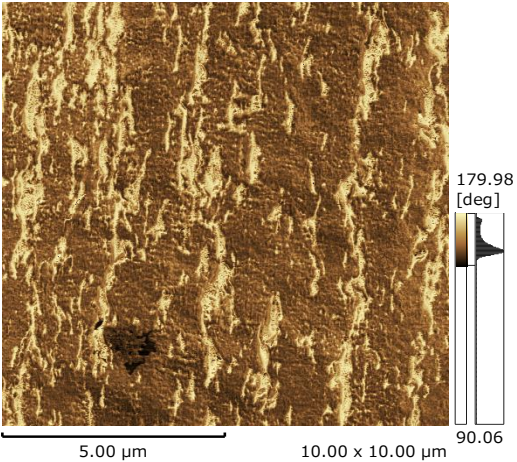
5  
SEPTON™ BIO-series  
SF902

6  
SEPTON™ BIO-series  
SF903

7  
SEPTON™ BIO-series  
SF904

8  
HYBRAR™  
7125

MD





**Kuraray Co., Ltd.**  
Elastomer Division  
Tokiwabashi Tower  
2-6-4, Otemachi  
Chiyoda-ku, Tokyo, 100-0004, Japan

✉ [elastomer@kuraray.com](mailto:elastomer@kuraray.com)

→ [www.kuraray.com](http://www.kuraray.com)

→ [www.elastomer.kuraray.com](http://www.elastomer.kuraray.com)

© Kuraray Co., Ltd. 2021

Precautions should be taken in handling and storage. Please refer to the appropriate Safety Data Sheet for further safety information. In using SEPTON™ and HYBRAR™, please confirm related laws and regulations, and examine its safety and suitability for the application.

For medical, health care and food contact applications, please contact your Kuraray representative for specific recommendations. Even so, users must conduct their own assessment, revisions, registrations as well rely in their own technical and legal judgment to establish the safety and efficacy of their compound and/or end product with SEPTON™ and HYBRAR™ for any application. SEPTON™ and HYBRAR™ should not be used in any devices or materials intended for implantation in the human body. Nothing contained herein constitutes a license to practice under any patent and it should not be construed as an inducement to infringe any patent and the user is advised to take appropriate steps to be sure that any proposed use of the product will not result in patent infringement.

**kuraray**